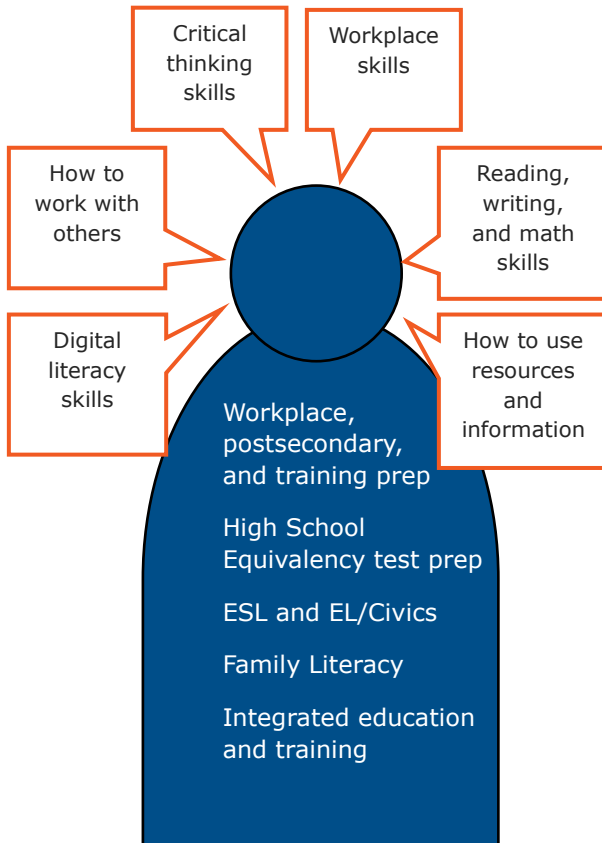


Workforce preparation as part of career pathways education leads to a stronger workforce

Our Students Learn:



For more information, contact:

Contact Person
Agency Name
Agency Address
City, State, ZIP
Phone
Email
Website

Adult Basic Education

— your partner in —

Workforce Development



The essentials of Title II adult basic education services in Pennsylvania

Improving skills for more than 20,000 Pennsylvanians each year

Adult basic education programs teach critical skills needed for success in:

- Workplace
- Postsecondary education
- Training

1.1 million

PA adults lack a high school diploma

Over 1.1 million PA adults don't have a high school diploma. In many cases, this prevents them from obtaining entry-level jobs.



185,000

PA adults do not speak English well or at all

Pennsylvania adults in urban and rural areas want to learn English for their jobs, families, and everyday lives.



The Czech Republic, Poland, and Estonia all scored higher than the U.S.

Average skill level of 23 developed countries



The U.S. is **below the international average** for math and reading skills.

The U.S. was ranked 21st out of 23 countries in adult math skills. The U.S. is also below the international average in literacy and technology skills.

Pennsylvania adult education students met more than 20,000 outcomes in program year 15-16.

Our students achieved goals such as:

- Obtaining a new job or a better job
- Enrolling in college or a training program
- Obtaining a secondary school credential
- Improving English speaking and writing skills (for non-native speakers)
- Improving reading, writing, and math skills



Who do we serve?

Pennsylvania residents who:

- Are at least 16 years old;
- Are not enrolled or required to be enrolled in secondary school under Pennsylvania law;
- Are basic skills deficient; or do not have a secondary school (high school) diploma or its recognized equivalent, and have not achieved an equivalent level of education; or who are English language learners.

References:

OECD. (2013). *Time for the U.S. to Reskill: What the Survey of Adult Skills Says*. Retrieved from: http://skills.oecd.org/Survey_of_Adult_Skills_US.pdf

U.S. Department of Education. (2014). *Tapping the Potential: Profile of Adult Education Target Population*. Retrieved from: <http://www2.ed.gov/about/offices/list/ovae/pi/AdultEd/state-profiles.html>

Examples of successful local partnerships you can build

Building career pathways to meet employers' needs

One adult education program worked with its local Workforce Development Board, PA CareerLink® site, and employers to determine industry-specific career pathways from entry-level employment to advanced.

Supporting postsecondary and training program success

An adult education program partnered with a community college to prepare adult students for training programs. The program gave additional support and instruction throughout the students' time in the training program.

Coordinating resources and sharing information

An adult education program meets with workforce development and community agencies on a bi-monthly basis to share employer needs, local job market data, and resources.

Overcoming barriers to support workplace success

An adult education program provides comprehensive case management to address student barriers and help them to become self-sufficient. Local employers provide additional funding to support the program.