

Welcome!

We will begin shortly.
This webinar will be recorded.



*Type a message in chat if you
need tech support.*



*Click on Show Captions to turn
on the automatic closed
captions.*



PAAER
PA Adult Education Resources

GED® Informational Webinar #2

Tuesday, February 18, 2025

Meet Today's Presenters:

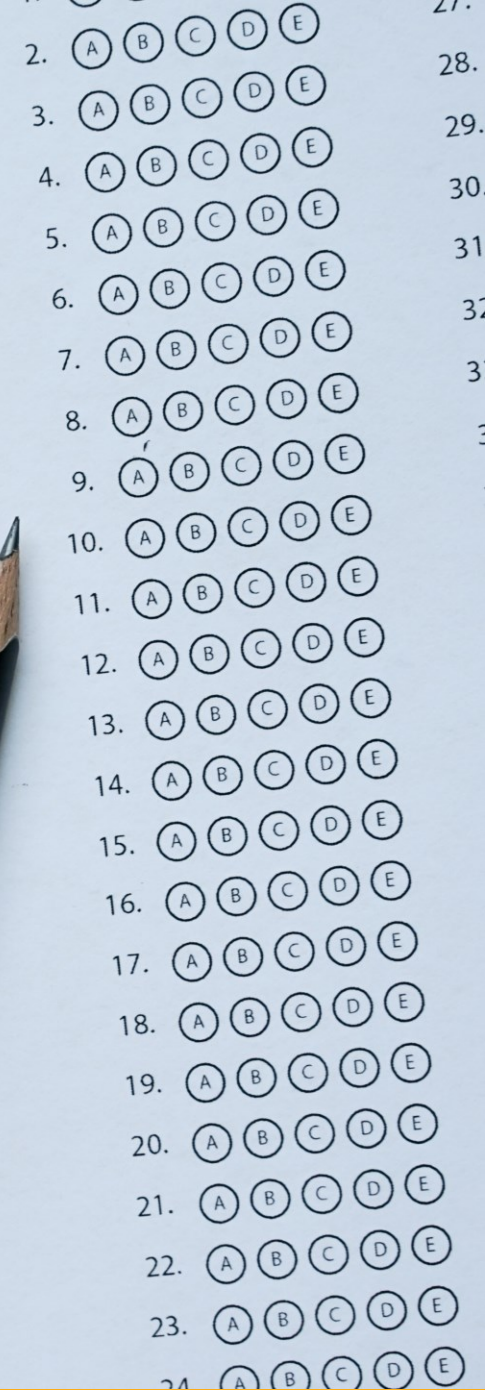


Amanda Ruth

Professional Learning
Opportunities Consultant

Bridging the Gap

- Identify tools to help students that are scoring in the 140-144 range.



Reasoning Through Language Arts (RLA)

- Don't get caught up with word matching.
 - Example
- 75% of the tests are informational texts, 25% are literary texts.
- Most effective way to teach grammar is in context.
 - [Example](#)



Name: _____

Date: _____

Pluto, the Dwarf Planet

The paragraph below tells about a special discovery in February. Can you find and mark ten errors in the paragraph? You might look for errors of capitalization, punctuation, spelling, or grammar.

What is smaller than earth's moon and takes 248 years to orbit the sun. Its Pluto, witch was called a planet until 2006, when scientists named it a "dwarf planet" insted. Pluto was discover by astronomer Clyde Tombaugh in February 1930. Some think Pluto could be a large asteroid. The shape of Plutos' orbit actually brings it close to the sun at times then the orbit of its neighbor, the planet Neptune

© 2014 by Education World®. Education World grants users permission to reproduce this work sheet for educational purposes only.

Reasoning Through Language Arts (RLA) – Extended Response

- Scoring Possibilities are 0,1,2 on three different traits.
 - Trait 1 – Creation of Argument & Use of Evidence
 - Trait 2 – Development of Ideas and Organizational Structure
 - Trait 3 – Clarity and Command of Standard English Conventions
- The Automated Scoring Engine is able to grade 95% of tests. The other 5% usually don't have enough unique writing to be able to be graded and are then hand-graded.
- A student could have one or two passages. One passage can contain both sides of the argument.

Reasoning Through Language Arts (RLA) – Extended Response

Top Student Challenges

- Response is not expected to be perfect.
- Just addressing pros and cons, they need to do more than read and summarize.
- The test is looking for an argumentative essay, **NOT** an opinion piece.
- Not using their own words – not enough original text to be scored.

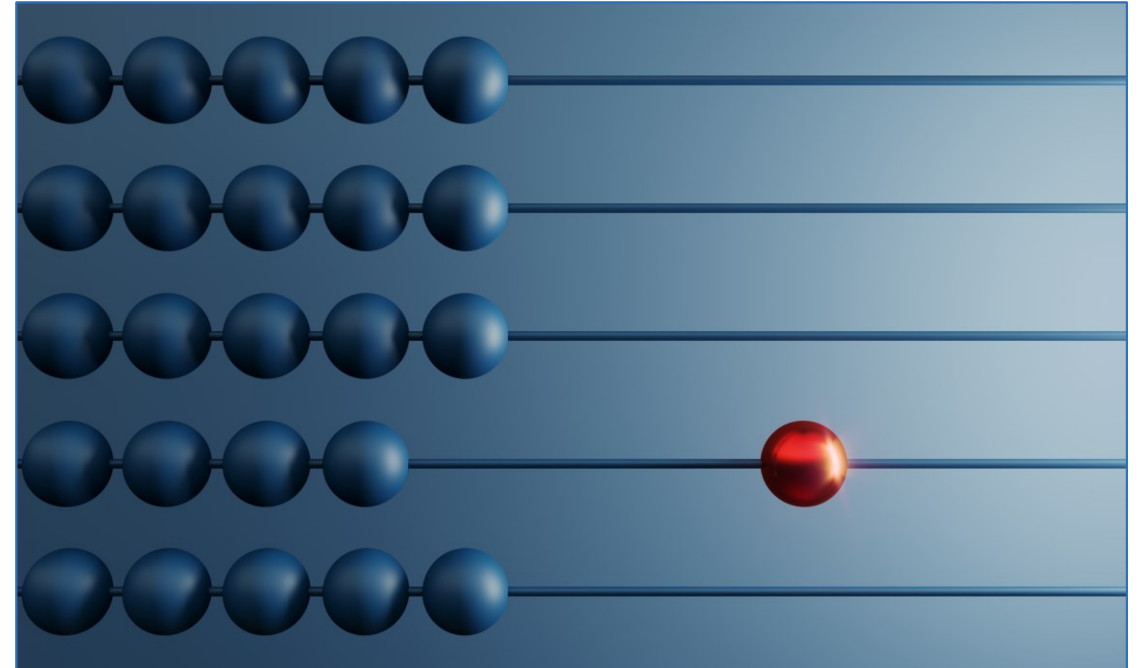
Reasoning Through Language Arts (RLA) – Extended Response

Resources for Supporting Students

- Alice Videos on website (8-part series)
- Use AI to create passages in response to a reading and have students use a rubric to pick out characteristics that make it strong or weak.
- Sentence Frames: _____ is best supported because _____ .
- Glossary of Key Terms in RLA Assessment Guide
- [Extended Response Resource Guide for Adult Educators](#)

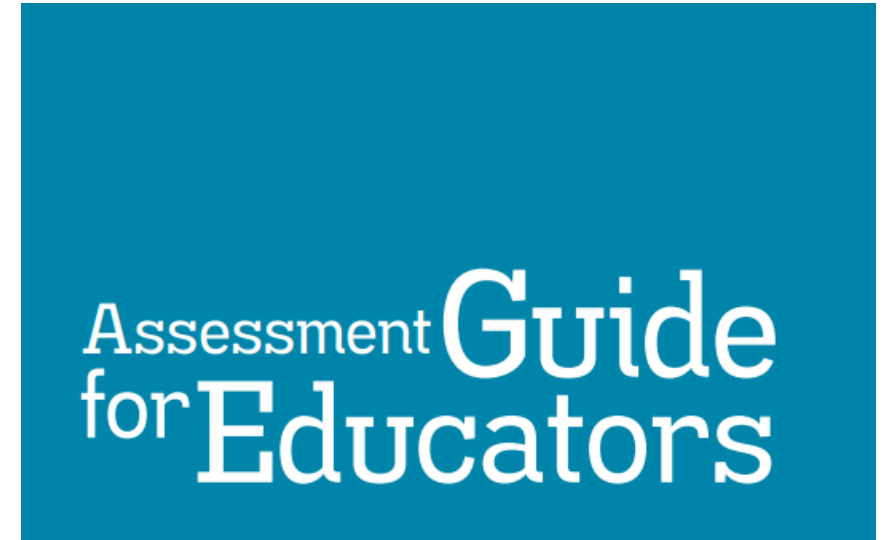
Mathematics

- Guaranteed to have one or two ordering questions on the non-calculator section. Often with a mix of decimal, fractions (improper and mixed number) and integers.
- Calculator Tutorial
- [Calculator Prohibited Indicators](#)
- Glossary of Terms in Assessment Guide



Science

- [Assessment Guide](#)
 - Glossary of terms
 - Item layout examples *
- [Handout with Commonly Used Scientific Tools](#)
- Consider school experience.
 - Use AI to help create experiment scenarios.
 - Use sentence frames to help with writing a hypothesis.
- [Slow Reveal Graphs](#)



Science

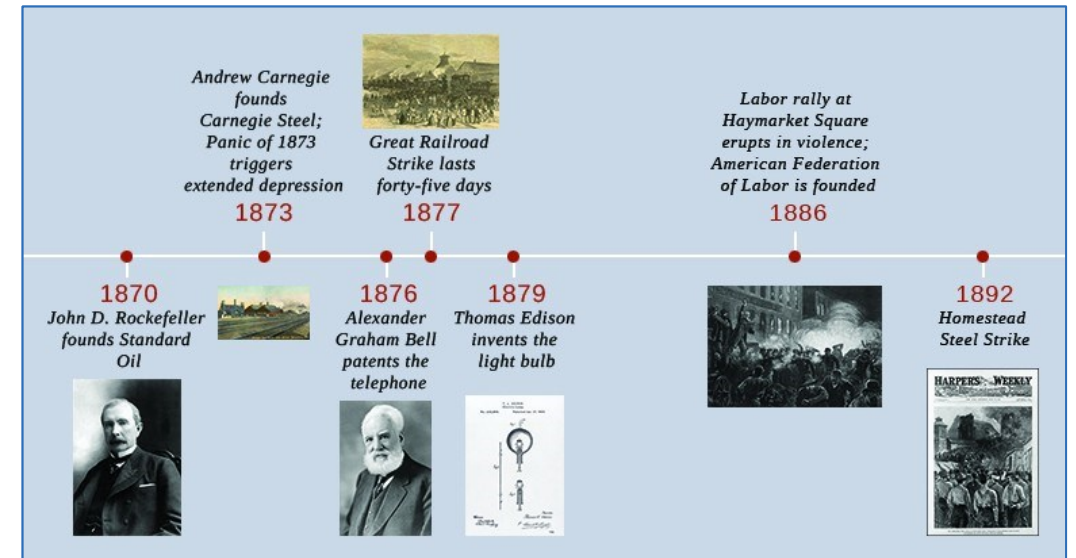
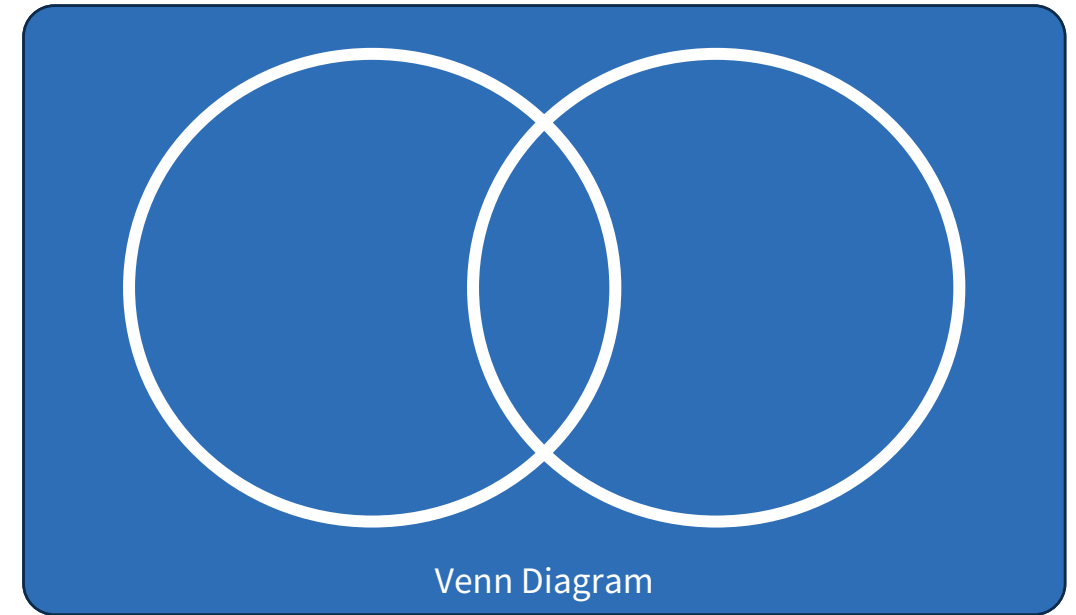
October 2020



GED® and GED Testing Service® are registered trademarks of the American Council on Education. Used under license. Copyright © 2018 GED Testing Service LLC. All rights reserved.

Social Studies

- High Priority Areas:
 - Civics and Economics
 - U.S. History
- High Impact Skills:
 - Sequencing
 - Inferences with Quotations
 - Comparing Different Ideas
- Glossary of Terms in Assessment Guide
- Consider school experiences.



[This Photo](#) by Unknown Author is licensed under [CC BY](#)

General Resources for GED® Prep

- [GED® Educator Handbook](#)
- Study Guides
- [Blog](#)
- Close Reading for Science and Social Studies
- High Impact Indicators & Performance Level Indicators
- [How-to-Guides for Supporting Students](#)
- Mathematics Formula Sheet – Know what's there and, most importantly, what's not.

What resources are available to help my students prepare for the test?

- [Prep Products](#)
- GED® & Me Mobile App

Featured Products

You asked – we listened. Our featured products were created based on adult educator feedback. We partnered with publishers to provide more Spanish learning, more practice questions, instructional video support for your classroom, and managing test assignments without voucher codes. Take a look at each of our featured products and see how they can enhance and streamline your instruction.



Give your student access to a full collection of GED practice questions and



Introducing GED Play – an instructional video program designed by Kaplan and

GED & Me™ The Official GED® Mobile App

DOWNLOAD THE APP

Now available in the App Store.



Thank you!

- Please take a few minutes to give us feedback about the GED® Webinars.

