

Welcome!

We will begin shortly.
This webinar will be recorded.



*Type a message in chat if you
need tech support.*



*Click on Show Captions to
turn on the automatic closed
captions.*



PAAER
PA Adult Education Resources

GED Webinar #1

November 12, 2024

Meet Today's Presenters:



Amanda Ruth

Professional Learning
Opportunities Consultant



Just getting
started

I want to
keep up with
the changes

I've got some
ideas ...

I could
write a
book on it

GED® History—Just the Facts

- GED® Test was developed in 1942 in response to the need for a pathway to credential veterans returning home from WWII. The GED® Test has consistently been available since that time.
- The American Council on Education (ACE) had sole oversight of the GED® Test through 2013. In 2014, ACE and Pearson entered into an agreement to co-own the GED® Test.
- The GED® Test assessment represents the major and lasting outcomes of a high school education. The test is recognized nationally and internationally for persons in need of a high school equivalency credential.
- Today the GED® Test is available in 48 states, U.S. territories and over 15 countries around the world.



Used with permission from GED Testing Services, 2024.

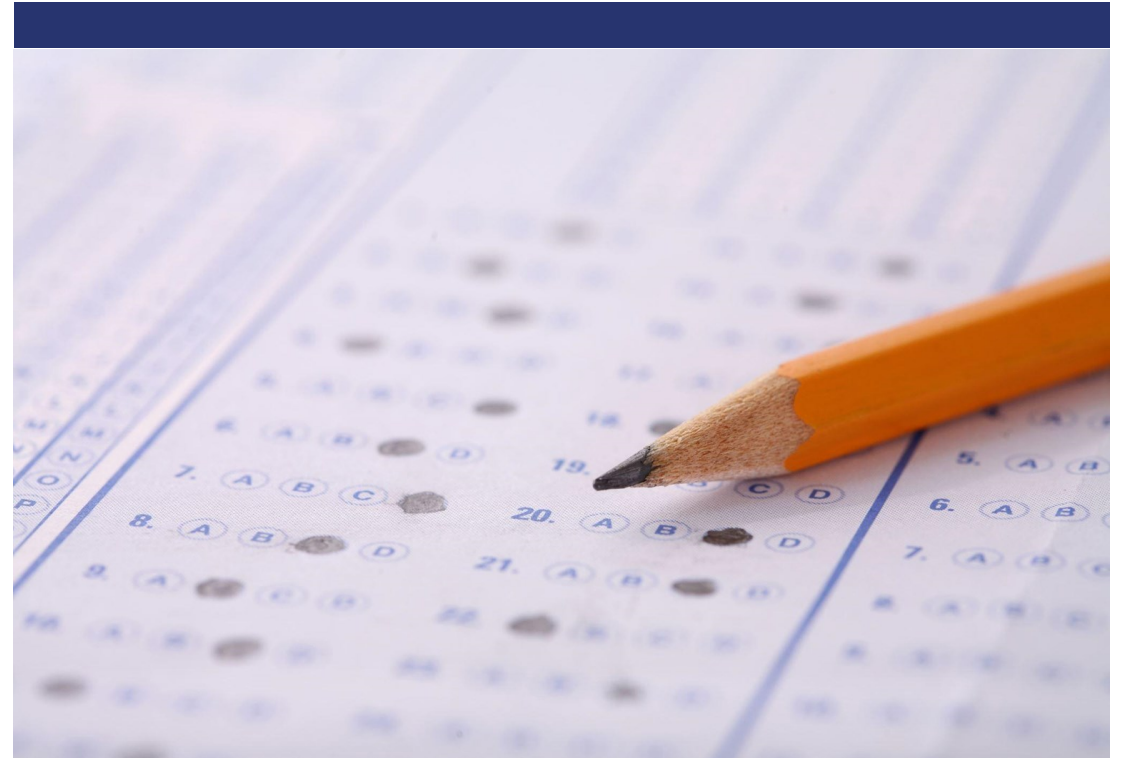
GED® Test

Test	Time	Notes
Reasoning through Language Arts	150 minutes	Includes 45 minutes for extended response (timed separately) and a 10-minute break
Mathematical Reasoning	115 minutes	Part 1 – calculator not allowed Part 2 – calculator allowed
Social Studies	70 minutes	
Science	90 minutes	

GED® Statistics

- 75% National Pass Rate
- 7% College Ready
- 2% College Ready with Credit*

*PA does not currently award credit for students that test within this range.

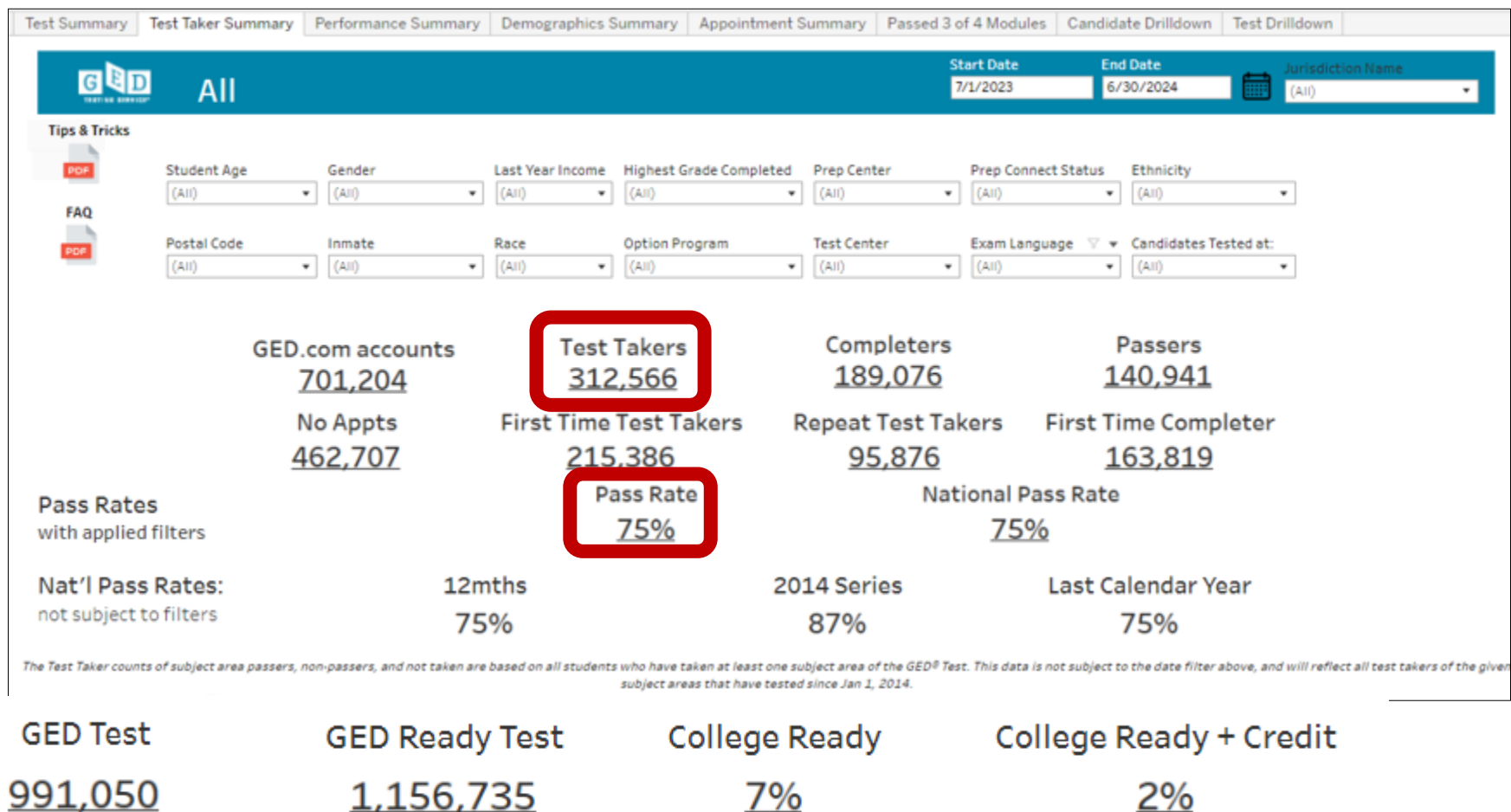


**WE'RE NOT
DONE YET**
2024 GED CONFERENCE

GED
TESTING SERVICE

Used with permission from GED Testing Services, 2024.

National GED Data: July 1, 2023 - June 30, 2024



13% of tests delivered via online proctored tests



Used with permission from GED Testing Services, 2024.

National GED Data: July 1, 2023 - June 30, 2024

Test Volumes

	MATH	RLA	SCIENCE	SOCIAL STUDIES
GED Test	272,982	250,899	220,929	246,240
GED Ready Test	336,328	298,969	244,992	276,446

GED Test Taker Performance

	MATH	RLA	SCIENCE	SOCIAL STUDIES
Below Passing	25%	17%	12%	15%
Passed	75%	83%	88%	85%
Nat'l Pass %	75%	83%	88%	85%
High School Equivalent	65%	71%	76%	72%
College Ready	6%	9%	10%	9%
College Ready + Credit	4%	2%	2%	4%



Used with permission from GED Testing Services, 2024.

National GED Data: July 1, 2023 - June 30, 2024

GED Ready Test Taker Performance

	MATH	RLA	SCIENCE	SOCIAL STUDIES
Likely to Pass	67%	72%	82%	79%
Too Close	22%	18%	14%	14%
Not Likely to Pass	11%	10%	4%	7%

Average Scores

	MATH	RLA	SCIENCE	SOCIAL STUDIES
GED Test Average Passing Score	155	155	156	156
GED Test Average Non Passing Score	139	139	140	139
GED Test Overall Average Score	148	151	153	152
GED Ready Overall Average Score	150	150	154	152



Used with permission from GED Testing Services, 2024.

Likelihood of Passing the GED® test based on CASAS Math or Reading GOALS Scores

CASAS – Diagnostic	
NRS levels based on CASAS Reading or Math Goals	Likelihood of Passing GED®
6	High – Ready to Pass
5	Medium – May Pass, more study may be needed
4 or below	Low – More Study Needed

GED Ready® - Assessing Readiness	
Three Score Level Indicators	
Likely to Pass	145-200
Too Close to Call	134-144
Not Likely to Pass	100-133

GED® Score Levels Explained

145



GED Passing Score

To pass the GED test, students need a score of 145 on all four subjects.

165 – 174



GED College Ready

At 165 or higher, students may qualify to bypass placement testing and remedial (non-credit) courses in college.

175 – 200



GED College Ready + Credit

At 175 or higher, students may qualify for up to 10 college credit hours at participating colleges.

GED® College Ready scores improve the chances for college success.

Learn more at GED.com/collegeready



Used with permission from GED Testing Services, 2024.

High Impact Indicators



◀ Back to GED Home

Q Search

English - US ▾

GED Manager



GED Overview

Educators

Student Programs

Administrators

Corrections

Accommodations

News

Teaching the GED® Test



GED Overview

Educators

Student Programs

Administrators

Corrections

Accommodations

News

High Impact Indicators

Skills are not all created equal! Improving certain skills can help students improve in other areas. These resources provide detailed guidance on how you can best help improve student performance.

- [High Impact Indicators](#) [View in Spanish](#)
- [Relationship Across Content Areas](#) [View in Spanish](#)

How-to-Guides for Supporting Students

Print-ready guides that provide step-by-step instructions complete with screenshots.

[Learn More](#)

High Impact Indicators



High Impact Indicators

All of the indicators listed in the GED® Assessment Target indicators describe the critical thinking skills essential to test-taker success in college, career training, and the workforce. However, those we are highlighting in the **High Impact Indicators** may be useful for educators to emphasize in their instruction.

We selected the following skills as High Impact Indicators because:

- They represent particular **foundational skills** that are the basis for the development of other skills covered in the GED® Assessment Targets and have **broad usefulness** that can be applied in multiple contexts.
- They are a **good fit for classroom instruction** because they are not complicated but are important for students to know and use.
- GED® testing data suggests that **educators may not be currently focusing on these skills** in their GED® test preparation.

While focused classroom instruction on these High Impact Indicators may quickly and positively impact your students' test performance, **educators should note that the High Impact Indicators are not more important than the rest of the indicators.** Proficiency with all of the indicators is essential for test-takers to perform well on the GED® test.

Performance Level Indicators

[GED Overview](#)[Educators](#)[Student Programs](#)[Administrators](#)[Corrections](#)[Accommodations](#)[News](#)

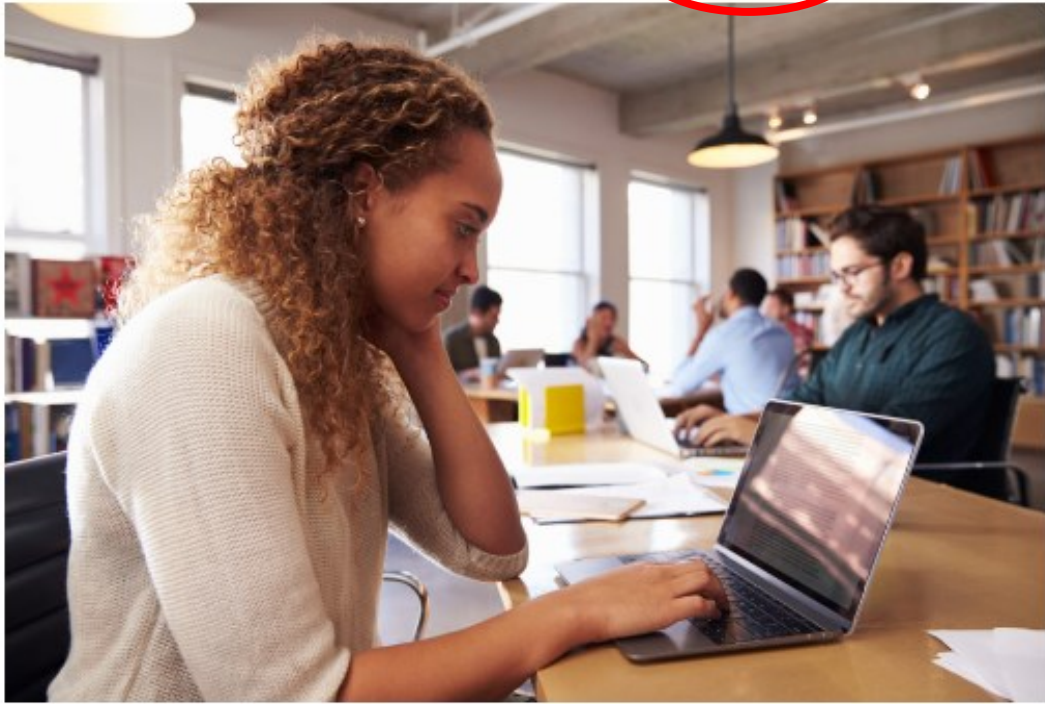
GED Test Performance Level Descriptors

The four performance levels are Below Passing, Passing for High School Equivalency, GED® College Ready, and GED® College Ready + Credit.

- [Performance Level Descriptors Chart – View in Spanish](#)
Breaks down the descriptors for all four subjects by performance level in an easy-to-read chart.
- [Assessment Target Comparison Chart – View in Spanish](#)
Compares the official indicator code language with the language test-takers see in their score report.
- [Performance Level Descriptors – View in Spanish](#)
A full listing of all Performance Level Descriptors for all four subjects.
 - [Learning Styles eBook](#)
 - [Digital Upskilling Pathways](#)



Educators Resources: Study Guides

[GED Overview](#)[Educators](#)[Student Programs](#)[Administrators](#)[Corrections](#)[Accommodations](#)[News](#)

Free Practice Test

[View All Sample Tests](#)

Study Guides

[View Study Guides](#)

Educators Resources: Extended Response



Videos

- Eight-parts series about how to write an extended response

Reasoning Through Language Arts – Extended Response Scoring Tools

English

[ER Resource Guide for Adult Educators](#)
[ER Resource Guide for Adult Educators – Taxation and Revenue](#)
[Scoring Tool for the GED Ready® practice test](#)
[GED Ready® Practice Test ER and Source Texts](#)

Spanish

[ER Resource Guide for Adult Educators – in Spanish](#)
[ER Resource Guide for Adult Educators – Taxation and Revenue – in Spanish](#)
[Scoring Tool for the GED Ready® practice test – in Spanish](#)
[GED Ready® Practice Test ER and Source Texts – in Spanish](#)

Extended Response Tools

- Available in both English and Spanish
- Extended Response Scoring Tool, Resource Guide and Practice Resources